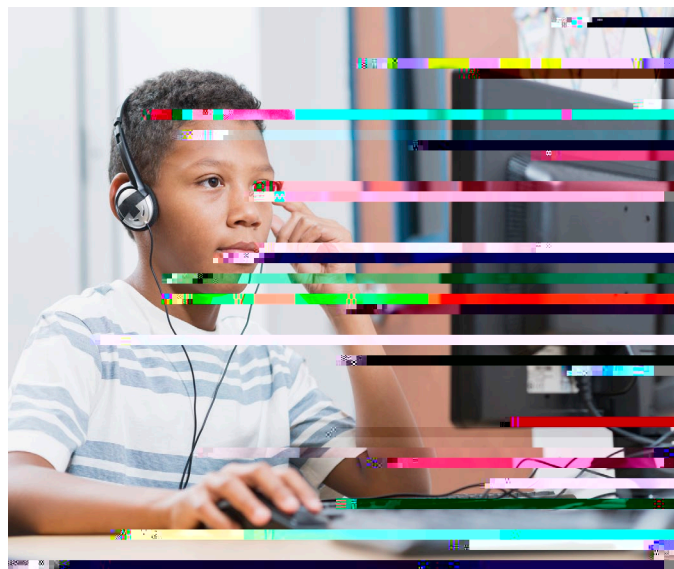




**ACCESS for ELLs is an English language proficiency test that measures students' academic English language skills.**



## ELL

ELL stands for English Language Learner. It refers to students who are learning English as a second language. These students may have different backgrounds and levels of proficiency in English. Schools often provide additional support and resources for ELL students to help them succeed in their academic and social lives.

## Language Domain

The Language Domain of the ACCESS for ELLs test focuses on a student's ability to understand and use English in various contexts. This includes listening to spoken language, reading written text, and speaking and writing. The test assesses a student's proficiency in these areas, which is essential for their academic success in an English-speaking environment.

